



Kelmscott Gardens, London, W12 9DB

Guide Price £335,000

WHITMAN & CO.

SALES · LETTINGS · COMMERCIAL

- 537sqft Ground floor apartment
- 15'9 Reception room
- Communal gardens
- West facing balcony
- Gated parking
- No onward chain

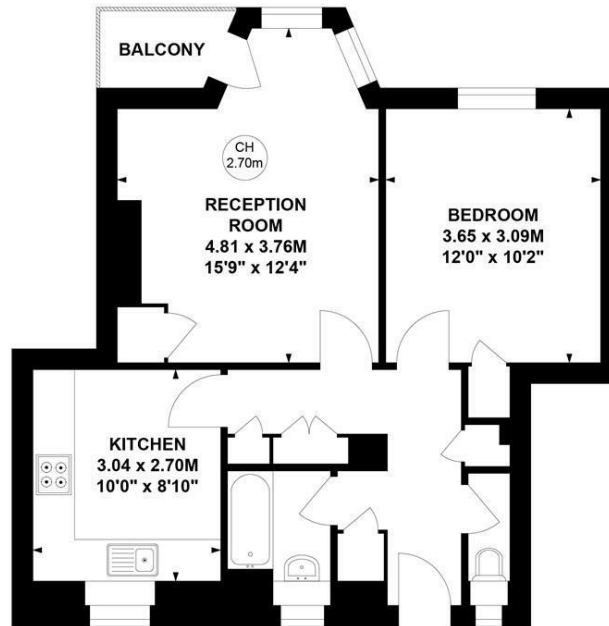
Tenure - Leasehold
 Lease length - 99 Years remaining
 Ground Rent - £10 pa
 Service Charge - £1644 pa
 Local authority - Hammersmith and Fulham
 Council Tax - Band C

THE PROPERTY

A light and spacious 537 sqft ground floor apartment with a private west-facing balcony located just off Askew Road within a short walk of numerous amenities. The flat benefits from well-proportioned rooms with the accommodation comprising a 15'9 reception room with bay window and door onto the west-facing balcony, a fitted kitchen with lots of storage, a double bedroom with fitted wardrobe, a bathroom, a separate WC, an entrance hall with storage, communal gardens and gated off street parking. The flat is in a superb location within close proximity of numerous shops, cafes and restaurants and just a couple of minutes walk to Ravenscourt Park. Transport links include Ravenscourt Park and Stamford Brook stations, local bus routes and the A40/M40 for routes in and out of London. No onward chain.

Kelmescott Gardens, W12

Approximate Gross Internal Area
 49.86 sq m / 537 sq ft



Key :
 CH - Ceiling Height

Ground Floor

Not to scale, for guidance only and must not be relied upon as a statement of fact.
 All measurements and areas are approximate only

SITUATION



5-7 Turnham Green Terrace, Chiswick, London, W4 1RG

Tel 020 8747 8800

E-mail sales@whitmanandco.com

Website www.whitmanandco.com



MISREPRESENTATION ACT 1967

Whitman & Co. for themselves and for the vendors give notice that these particulars do not constitute any part of, an offer of contract. All statements contained in these particulars are made without responsibility on the part of Whitman & Co. or the vendor. None of the statements contained in these particulars is to be relied upon as statements or representations of facts. Any intending purchaser must satisfy himself by inspection or otherwise as to the correctness of each of the statements contained in these particulars. The vendor does not make or give, and neither Whitman & Co. or any person in their employment has any authority to make or give, any representation or warranty whatever in relation to the property.